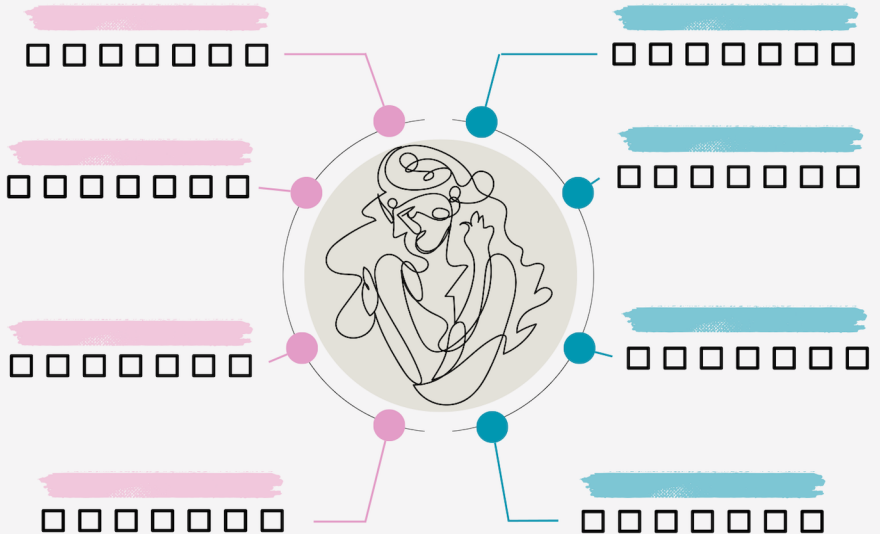


ROUTINENKÄRTCHEN



WOCHENRÜCKBLICK

Woche: _____

The form is designed for a weekly reflection. At the center is a circular graphic containing a line drawing of a woman's face and hands in a contemplative pose. Surrounding this central image are eight colored dots (four pink on the left, four teal on the right) connected to lines that divide the page into four quadrants. Each quadrant features a brushstroke header (pink on the left, teal on the right) and several horizontal lines for writing.